

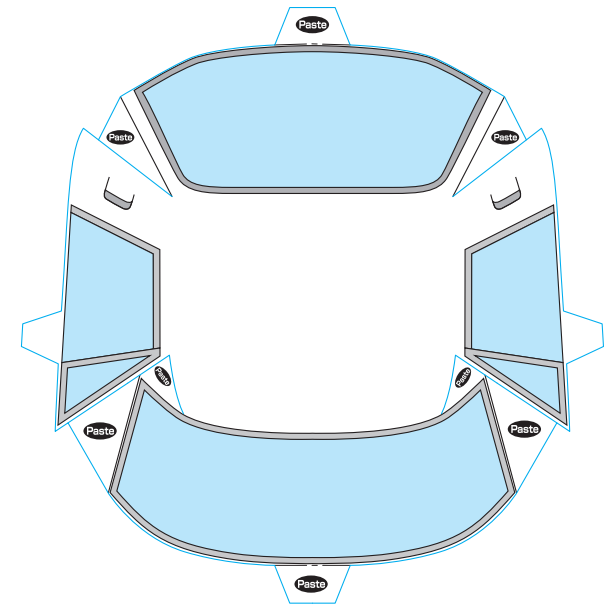
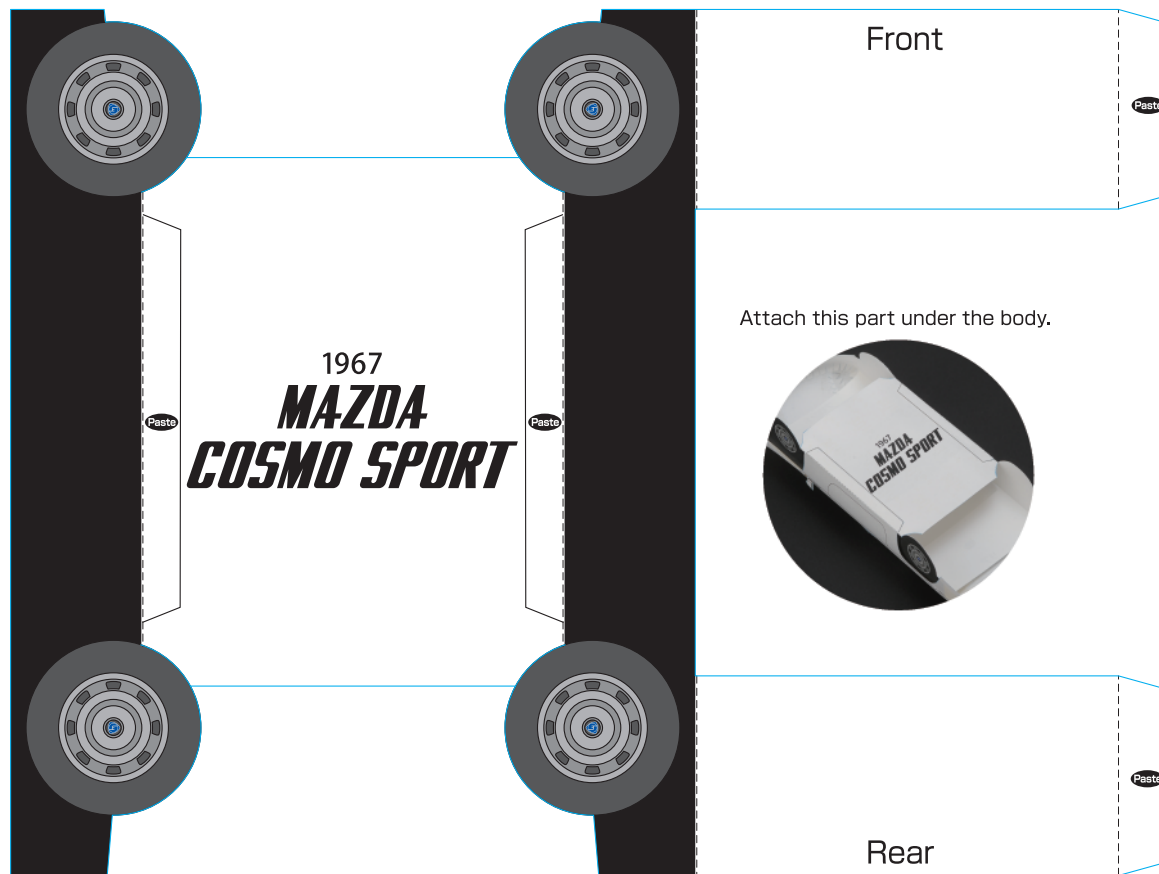


# MAZDA COSMO SPORT

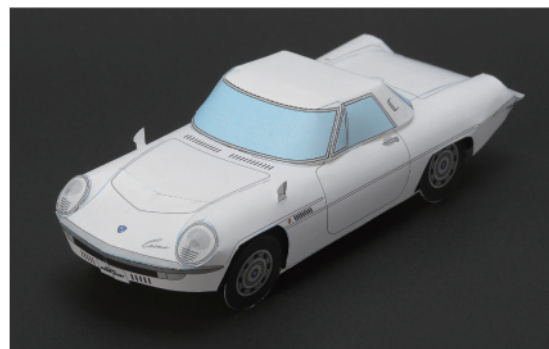
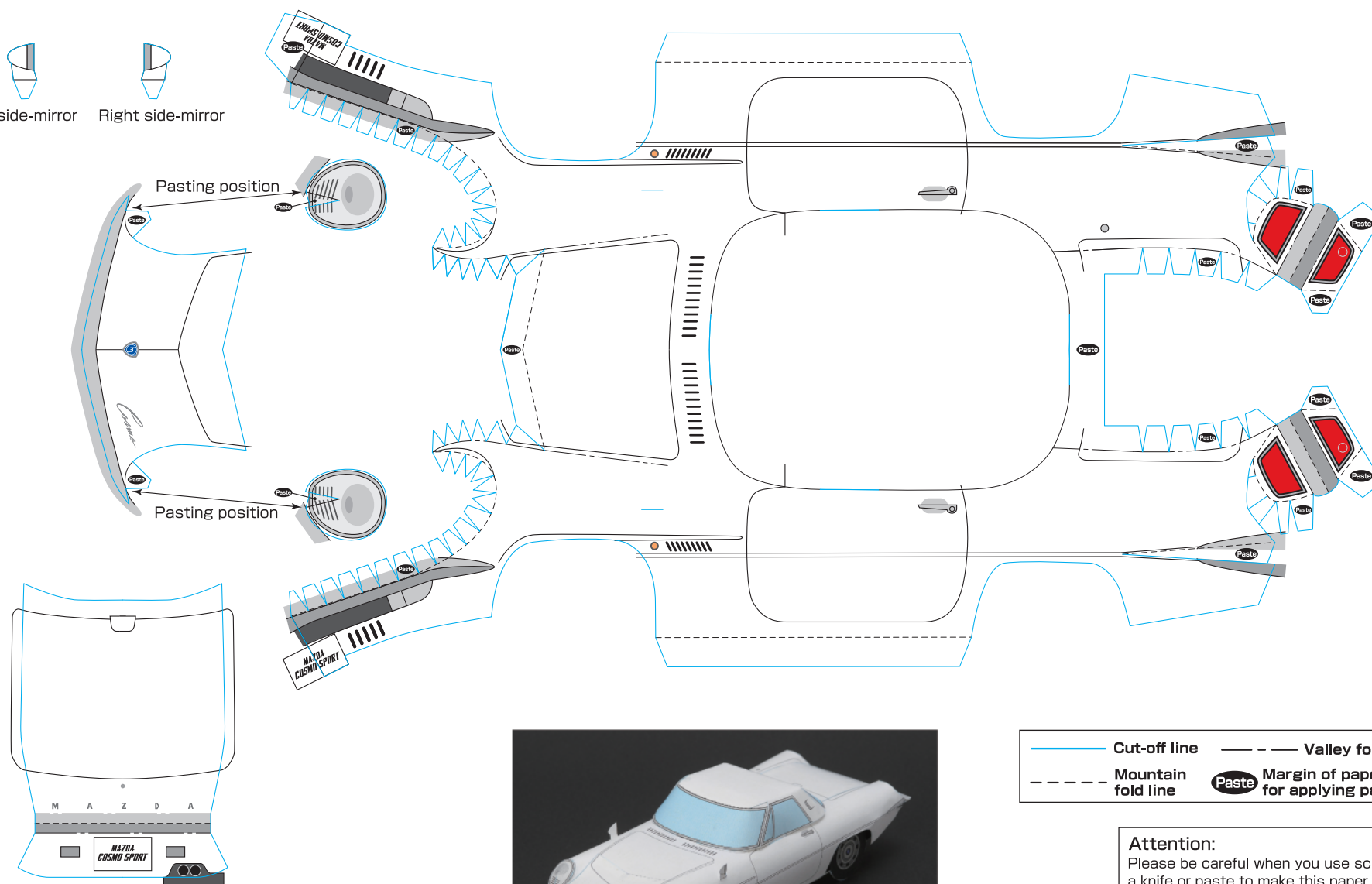
Let's paint colors and draw pictures on the car body.  
It will help to achieve "Zoom-Zoom" feeling!!

## MAZDA COSMO SPORT

Launched in 1967, the COSMO SPORT was Mazda's first sports car, and featured a rotary engine, which was said to be a "dream engine." The model was popular due to its high performance and futuristic design, and had appeared in a well-known hero program for children on TV in Japan, then.



Left side-mirror    Right side-mirror



Completion image

— — — Valley fold line  
 — — — Mountain fold line  
 — — — Cut-off line  
 Paste Margin of paper left for applying paste

#### Attention:

Please be careful when you use scissors, a knife or paste to make this paper craft. Please be careful not to lose small parts. Please keep this out of reach of infants. For best results, we recommend using thicker, high quality paper.

This paper craft is freely available for individual use and distribution without charge. However, it is prohibited EITHER to distribute this paper craft by sale OR to modify this paper craft template.

© 2016 Mazda Motor Corporation

1608