



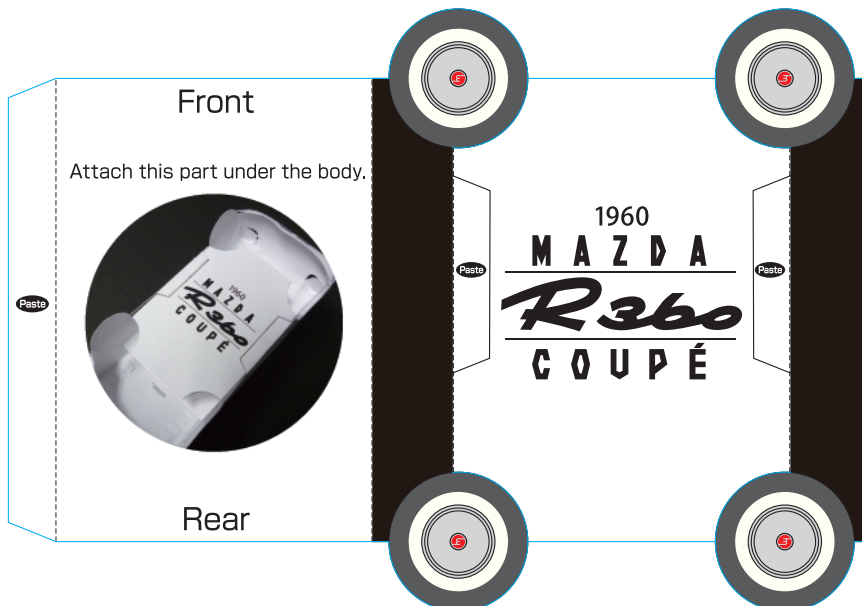
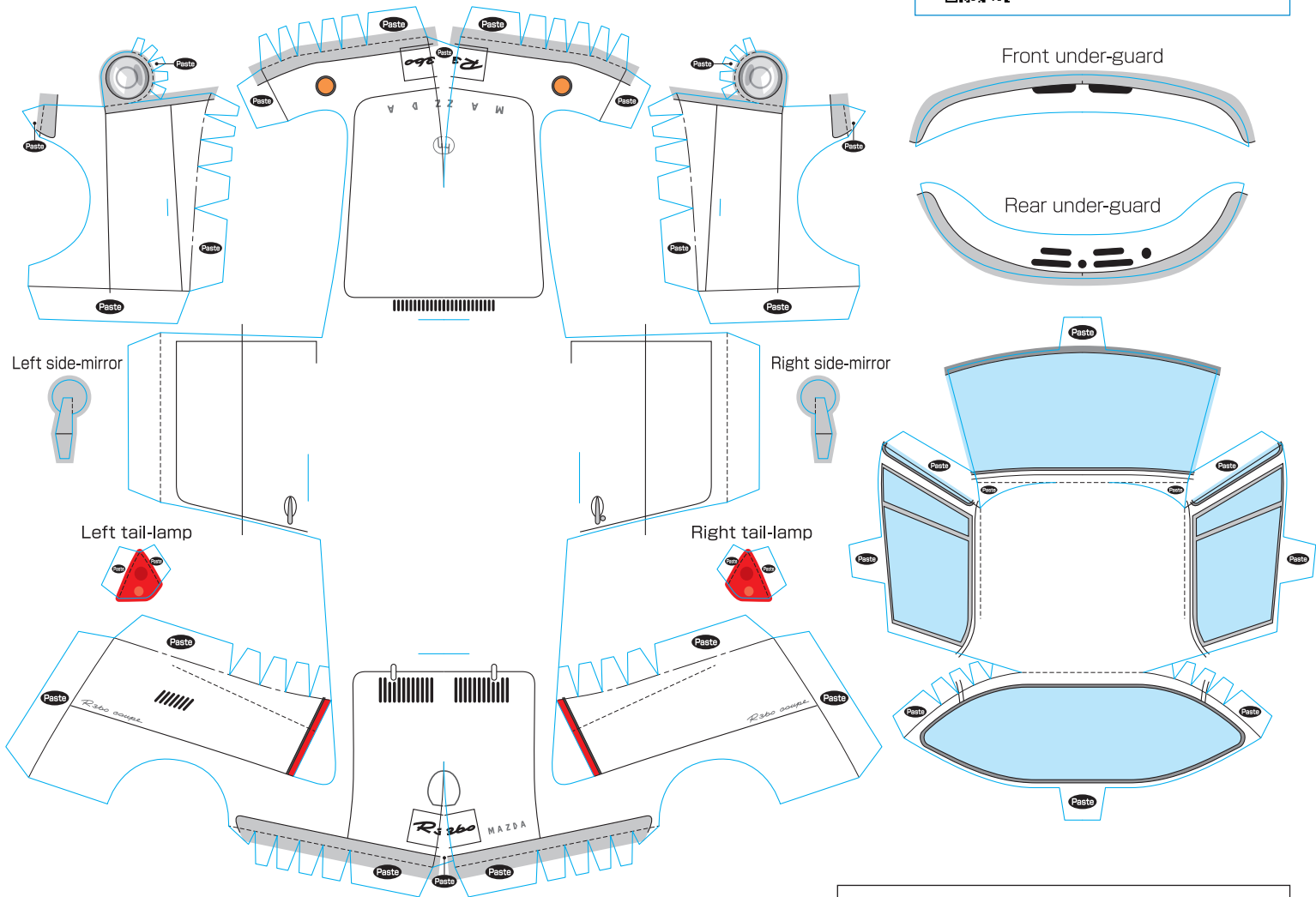
# MAZDA R360 COUPÉ

Let's paint colors and draw pictures on the car body. It will help to achieve "Zoom-Zoom" feeling!!

Launched in 1960, the R360 Coupe, a micro-mini that seated four, was Mazda's first passenger car. The model was a huge success, thanks to its design and the fact it was the lightest car produced in Japan. Furthermore, with a very low sticker price of 300,000 yen, it helped change the public perception of cars as luxury goods and fulfilled many people's dream of owning their own car.



Great Cars of Mazda: R360 Coupe



Completion image

## Attention:

Please be careful when you use scissors, a knife or paste to make this paper craft. Please be careful not to lose small parts. Please keep this out of reach of infants. For best results, we recommend using thicker, high quality paper.

This paper craft is freely available for individual use and distribution without charge. However, it is prohibited EITHER to distribute this paper craft by sale OR to modify this paper craft template.

© 2017 Mazda Motor Corporation